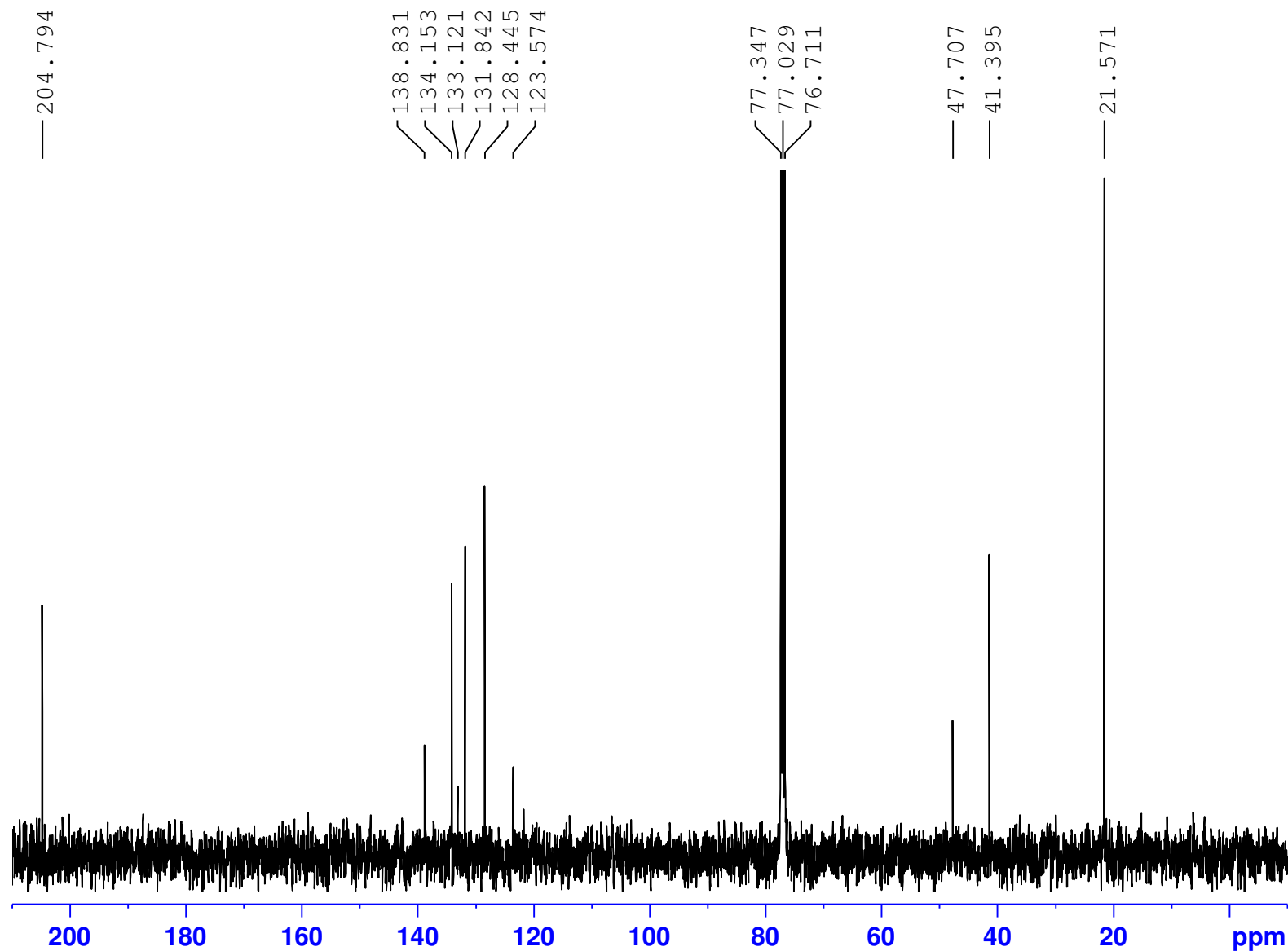


SS5-701-C

Av-400A



Current Data Parameters
NAME Jan15-2019
EXPNO 101
PROCNO 1

F2 - Acquisition Parameters
Date_ 20190115
Time 14.25
INSTRUM spect
PROBHD 5 mm PABBO BB-
PULPROG zgpg30
TD 32768
SOLVENT CDCl3
NS 480
DS 4
SWH 26315.789 Hz
FIDRES 0.803094 Hz
AQ 0.6225920 sec
RG 207.33
DW 19.000 usec
DE 6.50 usec
TE 295.0 K
D1 1.00000000 sec
D11 0.03000000 sec
TD0 1

===== CHANNEL f1 =====
SFO1 100.6942497 MHz
NUC1 13C
P1 7.75 usec
PLW1 69.98400116 W

===== CHANNEL f2 =====
SFO2 400.4119220 MHz
NUC2 1H
CPDPRG[2] waltz16
PCPD2 90.00 usec
PLW2 19.95299911 W
PLW12 0.19953001 W
PLW13 0.16162001 W

F2 - Processing parameters
SI 16384
SF 100.6831750 MHz
WDW EM
SSB 0
LB 2.50 Hz
GB 0
PC 1.40